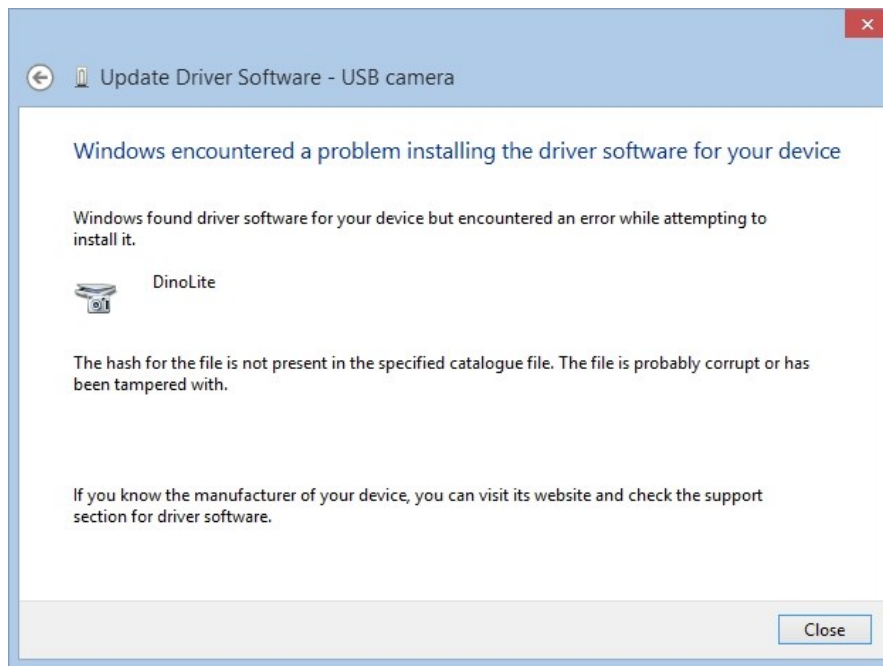


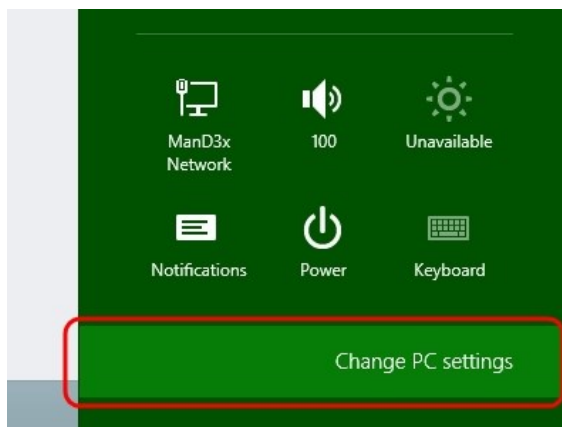
Driver Installation on Windows 8 or 8.1

If there is a message popup during the installation of driver such as the message show below, it will be required to disable the Driver Signature Enforcement in Windows 8 or 8.1 before proceeding of driver installation.



Procedure

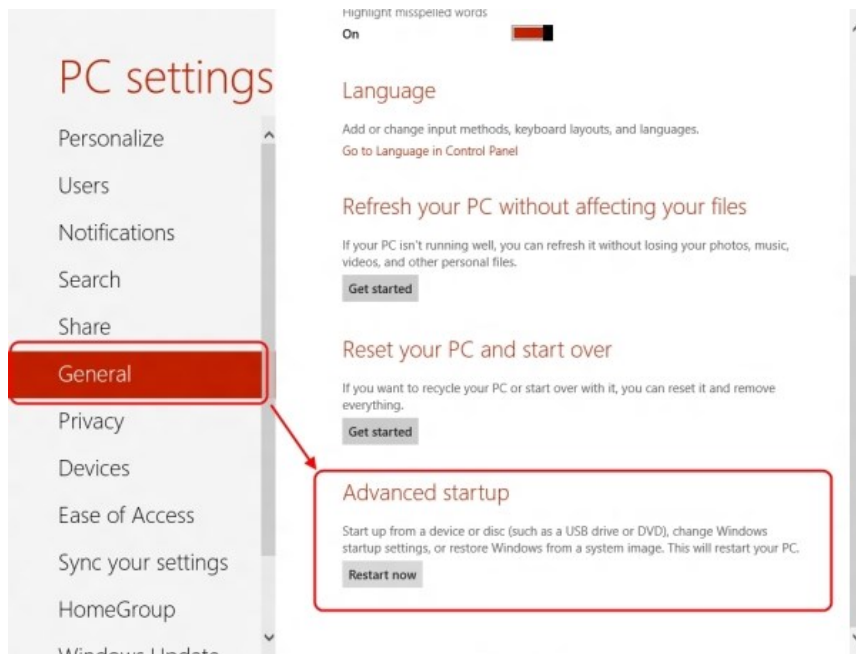
1. Open the Windows 8 Settings panel by pressing the Windows key + I keyboard combination . Click on **Change PC Settings**.



2. The PC settings panel will show up. Have the computer restart with steps as illustrated below for Window 8 or Window 8.1 respectively.

Windows 8

Select the **General** option, locate the “Advanced startup” section, then press the **Restart now** button.



Windows 8.1

- a) Select the **Update and recovery** option.



- b) Select the **Recovery** option, locate the “Advanced start-up” section, then press the **Restart now** button.



Refresh your PC without affecting your files

If your PC isn't running well, you can refresh it without losing your photos, music, videos and other personal files.

Get started

Remove everything and reinstall Windows

If you want to recycle your PC or restart completely, you can reset it to its factory settings.

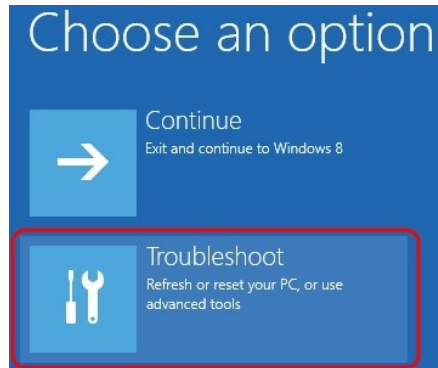
Get started

Advanced start-up

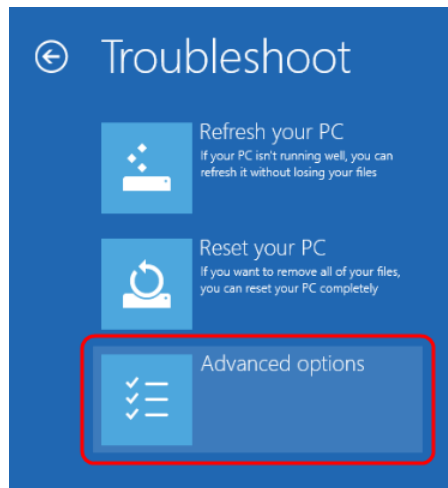
Start up from a device or disc (such as a USB drive or DVD), change Windows start-up settings or restore Windows from a system image. This will restart your PC.

Restart now

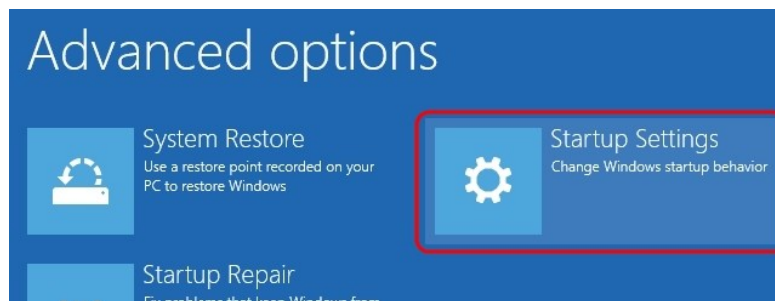
3. Once the computer has rebooted, select the **Troubleshoot** option.



4. Then **Advanced options**.



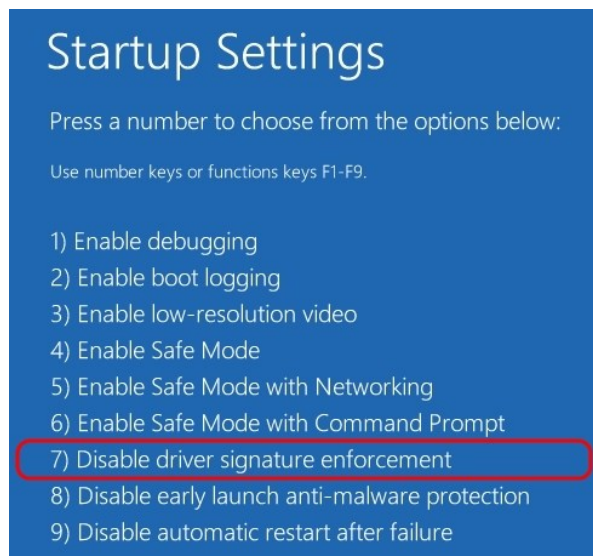
5. Then **Startup Settings**.



6. Click on **Restart** to restart the computer again.



7. A list of startup settings will show up. Select the **Disable driver signature enforcement** option.



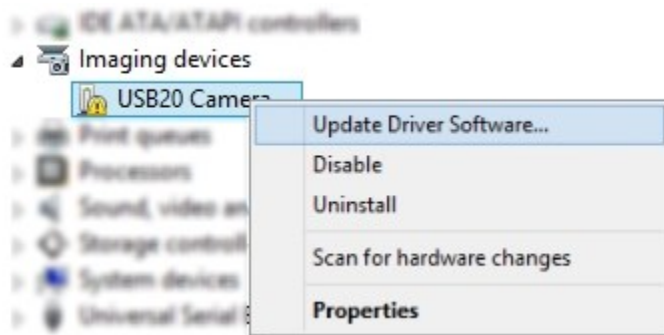
8. After the computer starts, plug in the Dino-Lite to the USB port.



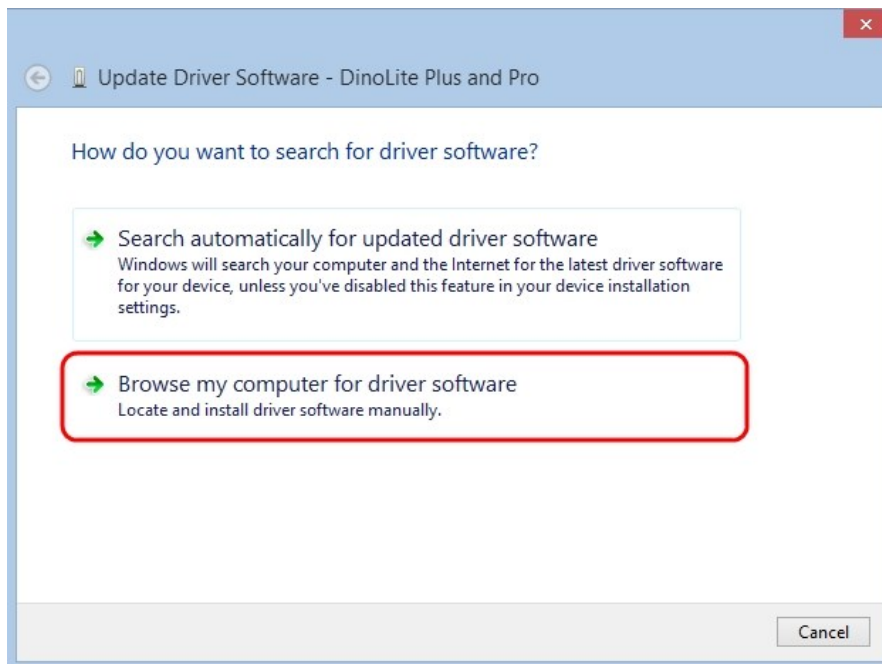
9. Now open the Device Manager by pressing the Windows key + X keyboard combination and then select **Device Manager** from the menu.



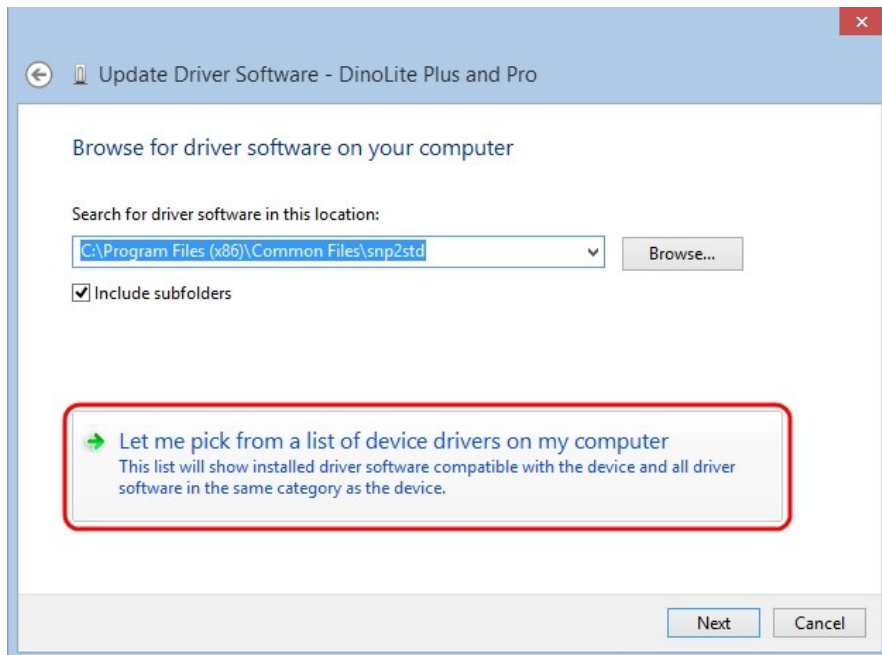
10. Look for devices with yellow “!” or “?” under the “Imaging devices” category. Right click on it and select **Update Driver Software...**



11. In the Update Driver Software window, select the **Browse my computer for driver software** option.



12. Then select the **Let me pick from a list of device drivers on my computer** option.



13. Select the device driver from the model list (**DinoLite Plus and Pro** for AM3XX/AM4XX, or **DinoLite** for AM211) and then press the **Next** button.

Note: If can't find the device driver from the model list, try to manually select the driver by clicking **Have Disk**. Then select the **snp2std** folder (AM3XX/AM4XX) or **snpstd3** folder (AM211) located at: C:\Program Files (x86)\Common Files\.

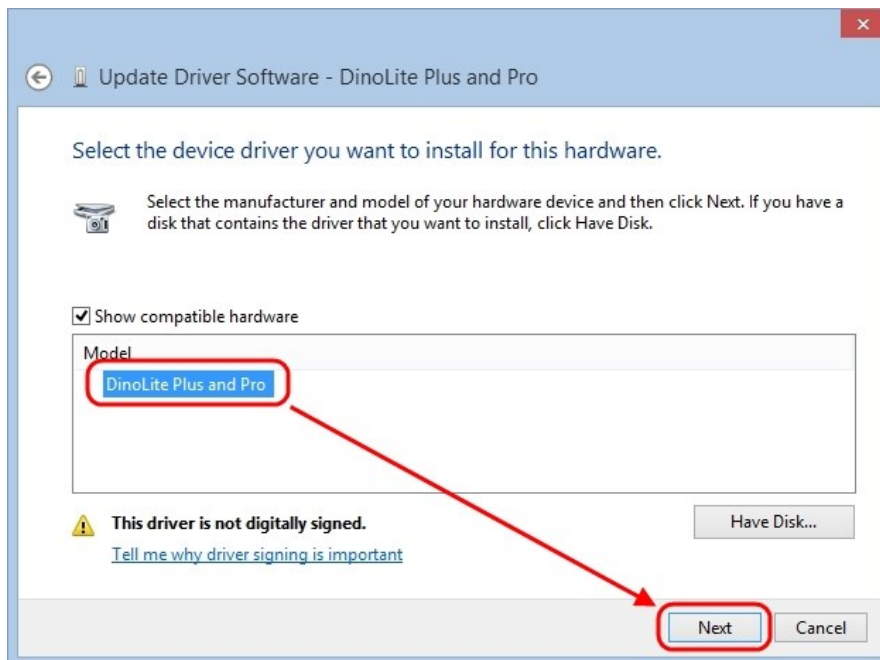
14. Select the device driver for your model series (refer below for which device driver to choose) and then press the **Next** button.

- For Dino-Lite Plus and Pro series (AM3XX and AM4XX), choose **DinoLite Plus and Pro** from the model list like the image below.

Note: If can't find DinoLite Plus and Pro, press on **Have Disk**. Then select the snp2std folder located at: C:\Program Files (x86)\Common Files\snp2std

- For Dino-Lite AM211, choose **DinoLite** from the model list.

Note: If can't find DinoLite, press on **Have Disk**. Then select the snpstd3 folder located at: C:\Program Files (x86)\Common Files\snpstd3



15. Now the Windows Security dialog as shown below should pop up. Select **Install this driver software anyway** to continue installation.



16. When the installation is complete a message will show like the one below.

