

DINO-LITE

REDEFINE THE MICROSCOPE



LFC PTE LTD
8 Ubi Rd 2, #03-01, Zervex
Singapore 408538
(65) 6749 9697
sales@lfc.com.sg



DINO-LITE INTRODUCTION



Dino-Lite digital microscopes provide a powerful, portable and feature-rich solution for visual inspection. The digital microscopes can go up to 900x magnification and 5 megapixel resolution. Dino-Lite's high-quality imaging, optics, feature-rich software and advanced hardware features set it apart from other digital microscopes on the market.

Today, Dino-Lite digital microscopes have become an irreplaceable tool for professionals worldwide. With more than 150 models, Dino-Lite comes with multiple connectivity options and numerous magnification. On top of that, there are different specialized illuminations to choose from: fluorescence, ultraviolet or infrared. A wide range of stands and accessories completes the product line-up.

Dino-Lite's product range offers solutions to meet the needs of the home user as well as the most demanding professional. It is suitable for mobile and field applications, without compromising on the image quality and functionalities. Recently, Dino-Lite has further remodeled the handheld microscopes by adding wireless compatibility on its new breed – The AF series.

Dino-Lite's Software

DinoCapture 2.0 : Windows 10, 8, 7, Vista, XP
DinoConnect : iOS, Android
DinoXcope 2.0 : OS



Dino-Lite High Magnification



Dino-Lite High Speed



Dino-Lite Medical

Small in size, but full of functionality.

The Dino-Lite digital microscope is a marvel of technology.

HANDHELD DIGITAL MICROSCOPE



AM7915MZT



AM7915MZTL



AM7515MT2A



AM7515MT4A



AM7515MT8A



AF4915ZT



HANDHELD DIGITAL MICROSCOPE



AF4915ZTL



AF3113T



AM5216ZT



AM5216ZTL



AM5218MZT



AM5218MZTL



PRODUCT COMPARISON

| | | | | |
|---------------|---|--|---|---|
| Product |  AM7915MZT |  AM7915MZTL |  AF4915ZT |  AM4113ZTL |
| Magnification | 10x-220x | 10x-140x | 20x-220x | 20x-90x |
| Distance | Standard | Long Working Distance | Standard | Long Working Distance |
| Connectivity | USB 2.0 | USB 2.0 | USB 2.0 | USB 2.0 |
| Resolution | 2592 x 1944 pixels | 2592 x 1944 pixels | 1280 x1024 pixels | 1280 x1024 pixels |
| LEDs | White (8) | White (8) | White (8) | White (8) |
| Polarizer | ✓ | ✓ | ✓ | ✓ |
| Measurement | ✓ | ✓ | ✓ | ✓ |
| OS | Windows XP, Vista, 7, 8, 10 Mac OS 10.5+ | Windows 8.1, 8, 7, Vista, XP MAC OS 10.4+ | Windows XP, Vista, 7, 8, 10 Mac OS 10.5+ | Windows 10, 8.1, 8, 7, Vista ,XP MAC OS 10.4+ |

DINO-LITE'S ACCESSORIES



RK-10
Stand Universal
Dino-Lite



RK-6
Multi Purpose
Tabletop Stand

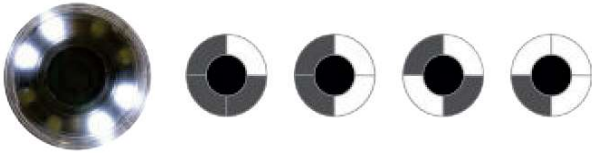


WF-20
Dino-Lite
Wifi Streamer

FLC

Flexible LED Control

Provides lighting adjustment options including intensity settings from 1-6, as well as the ability to turn on or off LED's by quadrant.



AMR



Automatic Magnification Reading

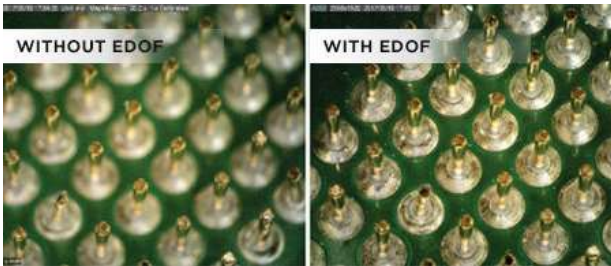
Displays the current magnification on screen with the included software for Windows or Mac OS.



EDOF

Extended Depth of Field

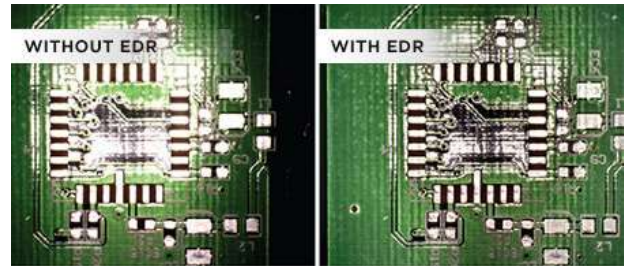
The EDOF capture mode can take several pictures at different levels of focus and stack them into a clear image automatically with 1 click of the mouse.



EDR

Extended Dynamic Range

Ideal for object with large variation in brightness, the EDR largely increases the dynamic range by stacking pictures taken at different exposure with one click



Long Working Distance Optics

The LWD optics yields more working space between the object and the microscope, making it ideal for applications such as repairing or assembly.



D-sub Interface

Connect Dino-Lite directly into a VGA monitor which supports 720p resolutions through the D-sub interface for absolute convenience.



Brightfield / Darkfield

Without the need of other accessories, the brightfield and darkfield illumination can be provided separately or coordinated with each other to explore for more details.



HDMI Interface

The HDMI interface allows Dino-Lite to deliver real-time images to a LCD monitor without the presence of a computer.



Adjustable LED intensity

The LED intensity could be adjusted within 6 levels for providing further illumination flexibility.



Adaptable Interface

The adaptable interface provides the flexibility of transforming Dino-Lite into a wireless microscope when attaching with WF-20.



Adjustable Polarization

Certain Dino-Lite models include a polarizer feature which can be switched on/off or can be adjusted to offer full or half polarization.



VGA Resolution

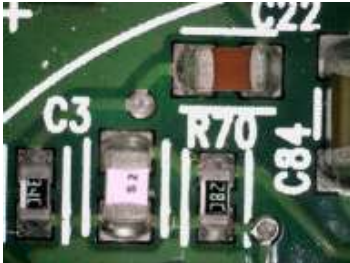
The CMOS image sensor transmits 640x480 resolution with up to 60fps.

DINO-LITE APPLICATIONS



Dino-Lite digital microscopes has a wide range of models available. It provides multiple solutions to meet the needs of different users. These are some application using Dino-lite.

INDUSTRIAL



**Failure Analysis
PCB Board**

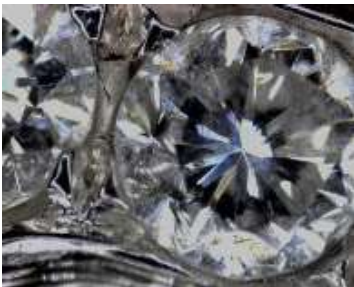


Textile Inspection

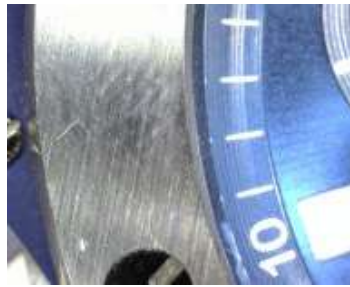


**Marking
Inspection**

JEWELRY



**Examine
Diamond**



**Watchmaking /
Repair**



**Ring
Inspection**

MEDICAL



**Dermatology
Scalp / Hair**



**Nail
Capillary**



Beauty

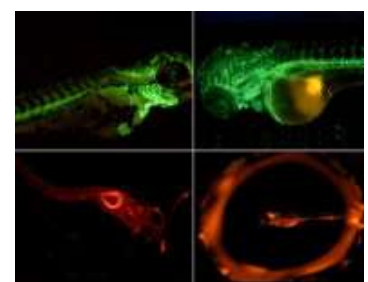
RESEARCH & DEVELOPMENT



**Fluid
Dispensing**



**Model
Organisms**



**Life
Sciences**

PRODUCT LIST

| Product | Resolution | Magnification | Interface | Measurement & Calibration | LEDs | Polarizer | LWD | Special Effects |
|------------|------------|---------------|-------------|---------------------------|---------|-----------|-----|------------------------|
| AM7915MZT | 5MP | 10x~220x | USB 2.0 | ✓ | 8 White | ✓ | - | FLC + AMR + EDR + EDOF |
| AM7915MZTL | 5MP | 10x~140x | USB 2.0 | ✓ | 8 White | ✓ | ✓ | FLC + AMR + EDR + EDOF |
| AM7515MT2A | 5MP | 130x~220x | USB 2.0 | ✓ | 8 White | - | - | FLC + AMR + AXI |
| AM7515MT4A | 5MP | 415x~470x | USB 2.0 | ✓ | 8 White | - | - | FLC + AMR + AXI |
| AM7515MT8A | 5MP | 700x~900x | USB 2.0 | ✓ | 8 White | - | - | FLC + AMR + AXI |
| AF4915ZT | 1.3MP | 20x~220x | USB 2.0 | ✓ | 8 White | ✓ | - | FLC + AMR + EDR + EDOF |
| AF4915ZTL | 1.3MP | 10x~140x | USB 2.0 | ✓ | 8 White | ✓ | - | FLC + AMR + EDR + EDOF |
| AF3113T | 640*480 | 20x~50x, 200x | USB 2.0 | ✓ | 8 White | - | - | - |
| AM5216ZT | 720p | 20x~220x | VGA (D-Sub) | - | 8 White | ✓ | - | - |
| AM5216ZTL | 720p | 10x~140x | VGA (D-Sub) | - | 8 White | ✓ | ✓ | - |
| AM52818MZT | HD 720p | 20x~220x | HDMI | - | 8 White | ✓ | - | - |
| AM52818MZL | 720p | 10x~140x | HDMI | - | 8 White | ✓ | ✓ | - |